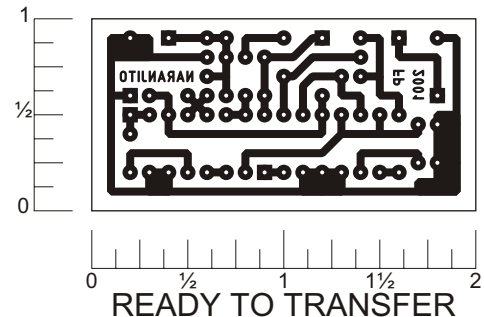
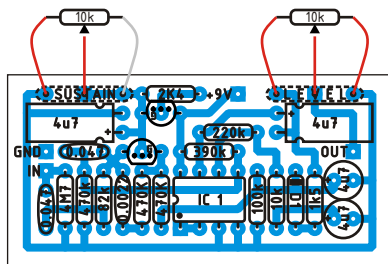


Build the Orange Squeezer on this board. Originally the potentiometers were trimpots inside the box, in this layout the potentiometers are outside the board for panel mounting. The pot labeled 'sustain' is actually a bias pot, you should turn this one until you find a position you like and leave it alone, which means it may be better to leave as a trimpot. You can always wire a regular pot and leave it inside the box. Off board components except for the potentiometers are not shown on the layout. Trademarks are property of their owners.



Parts List

Resistors

- 3 - 470k
- 1 - 100k
- 1 - 10k
- 1 - 4M7
- 1 - 390k
- 1 - 220k
- 1 - 1k5
- 1 - 82k
- 1 - 2k4

Pots

- 1 - 10k lin.
- 1 - 10k log.

Capacitors

- 2 - 0.047 μ F
- 1 - 0.0022 μ F
- 4 - 4.7 μ F

Transistors & ICs

- 2 - 2N5457
- IC1 - 4558
- 1 - 1N100 or 1N34A

Schematic

