

Version

1

TANIS - COMPUTER ENTERTAINMENT SOFTWARE

Borland Delphi Components

Accelerator Generator for Delphi

BORLAND DELPHI COMPONENTS

Accelerator Generator for Delphi

© Tanis 1998-1999

Nordbanegade 20, 3. th.

2200 København N.

Denmark

Phone +45 35 82 56 58 • email: trudslev@hotpop.com

homepage: <http://welcome.to/tanis>

Table of contents

Introduction_____	1
Installation_____	1
Uninstallation_____	4
Distribution and use _____	4
The author _____	4
How to use Accelerator Generator _____	5
How to start Accelerator Generator _____	5
How to use Accelerator Generator _____	6
Technical Things _____	7
History _____	7
Bugs_____	7
Future_____	7
Acknowledgments_____	8
Trademarks_____	8
Thanks_____	8
Tanis - Computer Entertainment Software _____	9
Other free Tanis products_____	9

Introduction

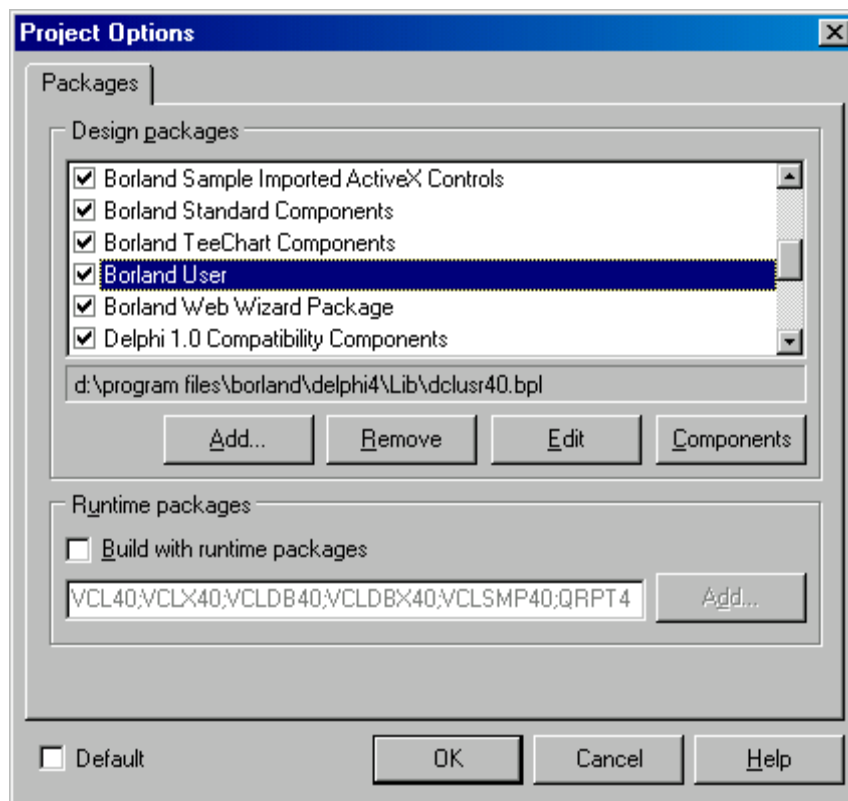
Contains information and an installation guide for Accelerator Generator for Delphi.

Working with the visual RAD tool Borland Delphi on a daily basis, where designing forms is a big part of the process, I found myself getting kind of annoyed every time I had to select and especially maintain the accelerator keystrokes for all the components on the form. I thought to myself “There has to be an easier way”. So I came up with this little addition to an otherwise really great development utility.

Installation

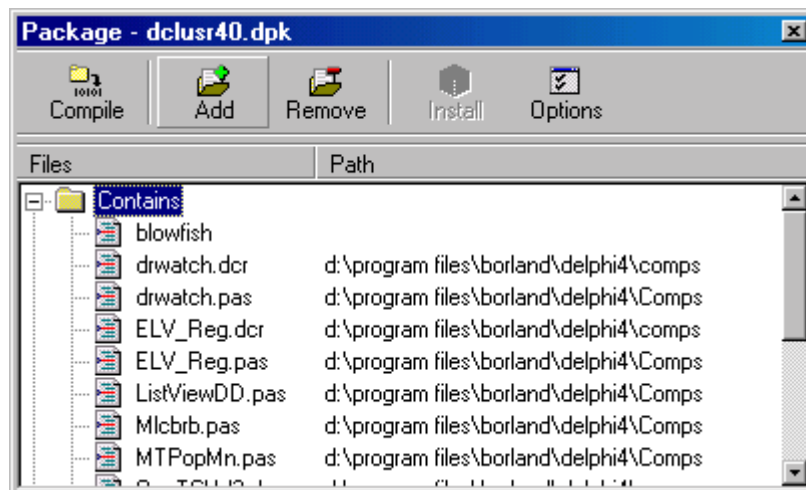
The installation of Accelerator Generator to your Delphi is not very complex. First, copy the files needed for Accelerator Generator to a directory of your choice, for example where you store your user components. Then go to your ‘Component’ menu and choose ‘Install Packages’.

Use the Install Packages dialog to install Accelerator Generator.

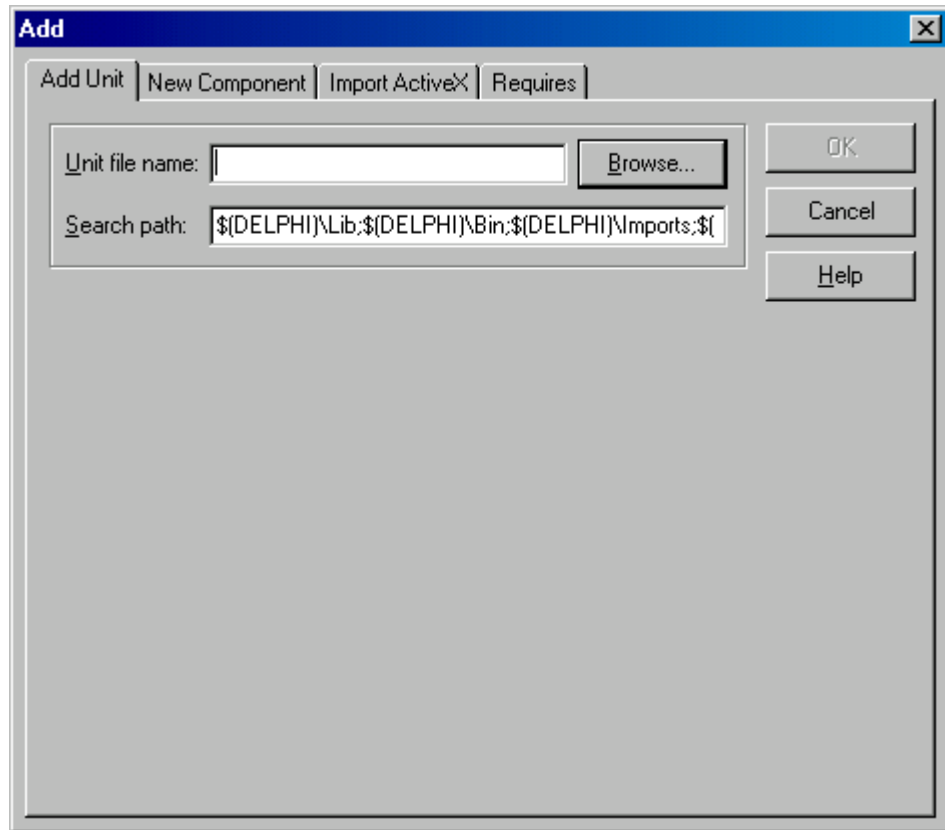


Pick the 'User' package and choose 'Edit', and answer 'yes' to close the dialog and edit the package. Click the 'Add' button.

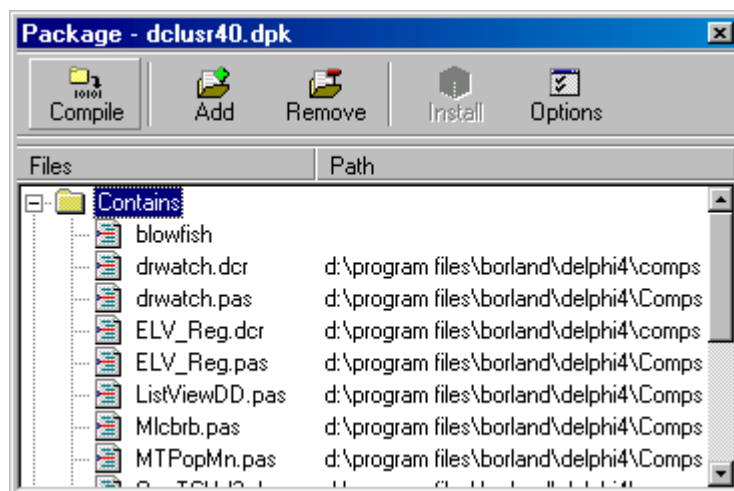
Then add the Accelerator Generator source code to your 'User Package'



Type ‘_AxlGen’ in the ‘Unit file name’ edit box and press return.



Then all you need to do is click ‘Compile’ and then the Accelerator Generator becomes a part of your Delphi installation.



Uninstallation

To uninstall Accelerator Generator is very easy. Just edit your 'User Package' (see previous section) and press the Remove button and pick '_AxlGen' and press 'OK'.

Now you can delete the two files that accelerator generator consists of: _AxlGen.PAS and _AxlGen.DFM.

Distribution and use

Postcard Ware is a concept developed by Klaus Seistrup.

Accelerator Generator is **NOT** placed in Public Domain, but you are free to use, copy & distribute it, provided that you follow these simple guidelines:

- Accelerator Generator is Postcard Ware. I.e., if you like this component and use it regularly, you are **OBLIGATED** to send us a postcard. You can find our address below. We feel that it is not too much to I ask, so please send that postcard.
- When distributed it should be in its original unaltered state.
- The fee for copying the program must not exceed the price of the media.

The author

Tanis has created a lot of software. They have been working on the PC since April 1992. A lot of their software is released as Postcard Ware, which makes it almost free. Read more in chapter 5.

Accelerator Generator was written by Sune Trudslev from Tanis - Computer Entertainment Software. It was written using Borland Delphi 3 and 4.

If you wish to contact Tanis you can do it at the following address:

Tanis
Attn. Sune Trudslev
Nordbanegade 20, 3. th.
2200 Copenhagen N.
Denmark

If you are connected to the Internet, you can contact Tanis at the following addresses:

Internet: trudslev@hotpop.com

How to use Accelerator Generator

Contains a users- guide on how to use Accelerator Generator

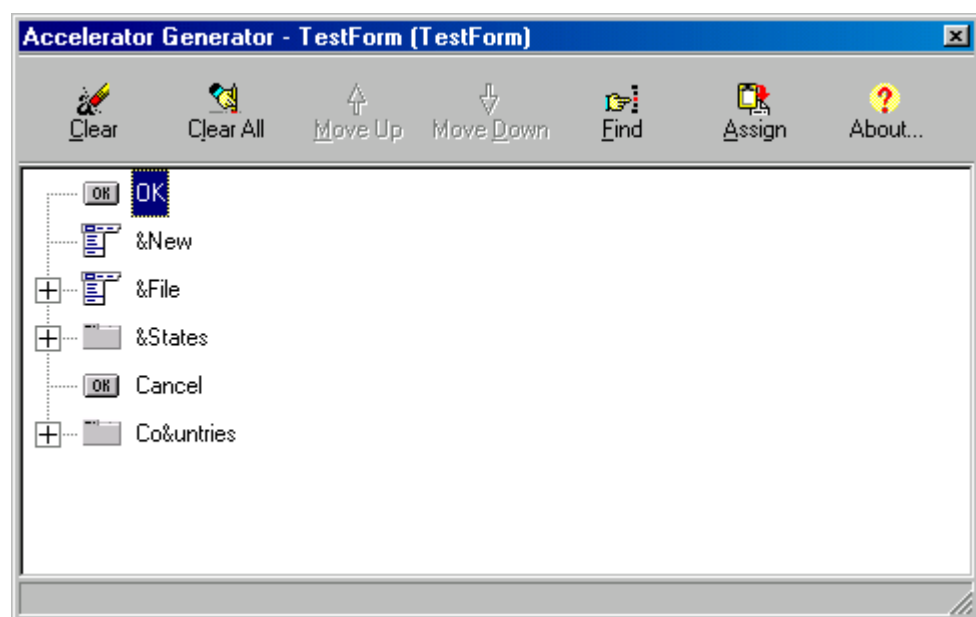
Accelerator Generator has a very easy-to-use interface. It is built so that it resembles the rest of the Delphi user interface.

How to start Accelerator Generator

Accelerator Generator is installed as the default editor on the forms and the panels.

That means you should be able to access it by either double clicking on the form or the panel or by choosing it from the popup menu of either components, however, because of the nature of forms, it is not installed on the popup menu of the form.

When Accelerator Generator opens it looks something like this. It shows all the controls that require accelerator keys. Note that TLabel components are only included if the FocusControl property is assigned.



How to use Accelerator Generator

First a short explanation of the buttons in Accelerator Generator:



This button clears the accelerator key of the currently selected control.



This button clears the accelerator keys of all controls.



This button moves the currently selected item up.



This button moves the currently selected item down.



This buttons finds the best accelerator keys.

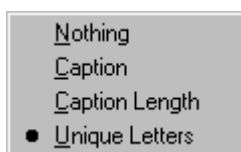


This buttons assigns the found accelerator keys to the form.



This buttons shows information about Accelerator Generator.

On the treeview there is a popup menu which lets you choose what sorting method to use on the list of controls. If you choose 'Nothing' you are able to move the controls up and down so that you can customize the sorting order of the controls.



Technical Things

Contains information of a more technical nature

History

This is the history of WallPaper Timer.

Version	Date	Description
1.00	7/11/99	First released version. Down to earth user interface. Room for improvement here and there.

Bugs

No known bugs, however should you find any, please report them.

Future

The future of this product depends on you. If you want some more options or find any bugs, please send us a note. Any and all ideas will be appreciated.

Acknowledgments

Contains acknowledgments and thanks to people involved with Tanis.

Trademarks

- Microsoft Windows 95 and 98 are trademarks of Microsoft Corporation.
- Borland Delphi is a trademark of Inprise.

Thanks

Sune Trudslev would like to thank the following people (not in order of significance):

- Brandy (for being the most wonderful and supportive wife)
- Klaus Seistrup (for the cool postcard ware concept)
- Myself (for getting this great idea)

Tanis - Computer Entertainment Software

*Contains information about other postcard ware products created
by Tanis.*

Tanis has been creating software for more than seven years. A big part of the software is freeware tools and programming utilities. In this chapter you will get a short explanation of the programs so you can see if they are something you can use. Let us remind you again: these programs are postcard ware, that means that you are free to use, copy & distribute the program, but if you do, you are OBLIGATED to send a postcard to the author.

Other free Tanis products

Here are the descriptions; you are able to find these programs and probably many more on the Internet at:

<http://welcome.to/tanis>

Filename	Platform	Description	Distribution
LS102.ZIP	DOS	LogSize 1.02 – Helps you resize your log files when they exceed a specified size. Includes: Extended wildcards (UNIX style), Quiet switch, Nice manual :-)	Postcard Ware
MDEF100.ZIP	DOS	MakeDef 1.00 - A little utility to make your computer boot under the most recent configuration. Requires MS-DOS 6.00 or above.	Postcard Ware
SP100.ZIP	DOS	SplitPost 1.00 - This utility allows you to post source	Postcard Ware

Filename	Platform	Description	Distribution
		codes in newsgroups and conferences splitting long lines with "..." and when you receive a text split using SplitPost you're able to join the lines together recreating the original text. Includes: Danish and English language, Nice manual :-).	
XDEL106.ZIP	DOS	XDEL 1.06 – THE DelTree replacement. This utility is a replacement of the DelTree command. Includes: FAAAST, nice (cluster size aware) statistics, support for "NCD"-like CD replacements, Windows 95 aware (long filenames).	Postcard Ware
LFIX102.ZIP	Win95	LFNFIX 1.02 – Enables you to restore long filenames when copying or backing up using old software or network drives.	Postcard Ware