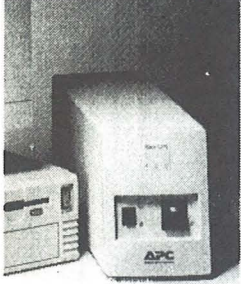
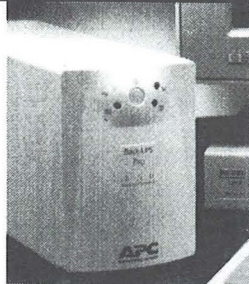


Batteries Included!



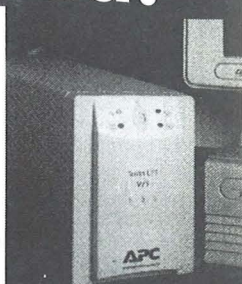
Back-UPS®

The best value in power protection for workstations.



Back-UPS Pro®

Performance power protection for advanced workstations.



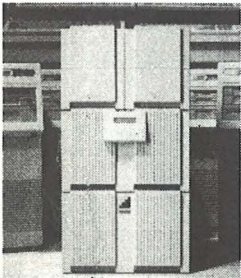
Smart-UPS® v/s

Best Value Server power protection for small business and department LANs.

APC™

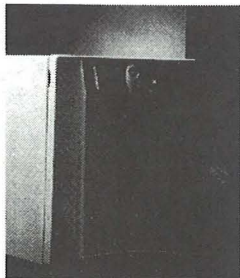
AMERICAN POWER CONVERSION

The worlds most reliable power protection



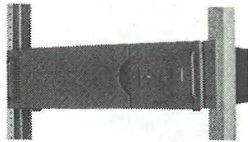
Matrix-UPS®

Advanced, modular power management for datacenters and mission-critical servers.



Smart-UPS®

Performance power management for advanced business networks.



Smart-UPS® RM

The award-winning power of Smart-UPS, in a convinient rack-mount design.



mira data A/S

Official distributor

For more information contact Mira Data A/S:
Phone: +45 9744 3500 * e-mail: sales@miradata.dk
www.apc.dk * www.miradata.dk

The Party 1997

Batteries Not Included!

1996

1995

1994

1993

1992

Map



Table of Contents

Map	2
Table of Contents	3
General Information	4
General Information	5
Sleeping Facilities	5
Bathing facilities	5
Night Life	5
History	6
Events	7
Party Bowling	7
The Rave 1997	7
Usefull Monitor	7
Windows 95 Demo	8
Java Demo	8
Macro Vision Conference	8
Surprise competitions	8
Coca Cola Body Crashing	8
Light, camera and action	9
Party TV	9
Network Installation	10
Network Overview	21
Competitions	22
Rulez	22
Deadlines	22
Contribution delivery	23
Voting	23
Prizes	24
Map	27

General Information

Rulez

- We will not accept anybody selling anything without our permission.
- Alcohol and drugs are not allowed at the party place. If we find any it will be confiscated.
- Intoxicated people will be thrown out or handed over to the police.
- We will not accept weapons, spraycans or firework etc.
- People who cause damages of any kind will of course have to pay for it.

Please notice that we take no responsibility for illegal swapping, software, hardware, video etc.

Thefts at The Party

To avoid loosing equipment at The Party it's a good idea always to keep an open eye at your gear. If you for some reason have to leave your table please ask your neighbor to watch out for your stuff. If you however are so unlucky to loose some equipment you must check up with your insurance company on what to do. If you have to contact the local police, etc. please go to the information, where organizers will give you sufficient information.

Bus connections

If you have to go to Aalborg, which is the nearest city with a rail way station, you can go by bus. The Bus leaves from the local bus station in Aars, see map. There are two buses leaving from Aars: 51 and 951X. The buses leave Aars at:

51:			951X:		
27/12	28/12	29/12	27/12	28/12	29/12
6.55	9.55	5.05	12.05	6.55	
9.25	11.25	5.40	19.05	9.55	
11.25	13.25	7.00	23.05	12.55	
13.25	16.25	8.05		14.55	
16.25	18.25	8.30			
18.25	20.25	10.30			
20.25	22.25	12.25			
	24.25	13.40			
		14.50			

Bus number 51 is a normal bus and the trip to Aalborg is 1 1/4 hour. Bus number 951X is an express bus which should save you about 1/2 hour of transport.

General Information

Sleeping Facilities

Due to lack of space in the party halls we have an external sleeping hall to The Party 1997. The sleeping hall is situated about 750 meters away from the party place in a local school. See the map for directions. The sleeping hall will of course be surveyed by our security team. An internal sleeping hall will open 04.00 on the 28th.

Bathing facilities

At the school it will also be possible to take a hot shower whenever you want. We will have people from security at the school to keep an open eye on things.

Night Life

Aars – the home city of The Party have two rather large discos. The two discos are situated about 750 meters from the party hall. At these discos you can buy beers and drinks and listen to all kinds of music. The disco will be open till about 05.00 every night. Aars also have a lot of other bars, where you can go.

Please notice that The Party doesn't accept intoxicated people who make trouble. Also: alcohol is NOT allowed in the party hall.



- det glade mødested i Aars...

Go' mad til rimelige priser

Discotek
torsdag
fredag
lørdag

Krostemning med
hygge og atmosfære

Juledepotten

9600 Aars · Telefon 98 62 16 00

History

The Story of The Party

The first The Party event took place in 1991 in Aars, Denmark. This city had an unusual feature for such a small town; an exhibition center. Even though the city was unknown to most people, they showed up en large numbers anyway. Back in these days it was important to be a well known figure to the demo scene if you would have a successful party, which was why The Party 1991 was officially hosted by three major demo groups.

In 1991 there was only 5 competitins; demo, music and graphics for Amiga and 2 computer game competitions. These competitions was a huge success with some great production, a professional presentation and a general good mood.

Compared to other parties we where good prepared in all other ways; professional and intertioanl attitude, plenty of electricity, enough space for everybody, sleeping halls, food, spare part sales and a lot more. All these factors made the fundament for The Party and made a reputation of being solid, well prepared and dependable.

With this fundament The Party grew an evovled. In 1992 competitions was expanded to also include C64 and PC, the 40K Intro was introduced, we held a concert, prizes where much bigger and the number of visitors doubled to 2500.

Still in a growth phase we utilized exhibition halls in Herning and Fredericia to make sure we had enough space. During these years we also introduced other scene related events and competitions; Techno Raves, Conferences, Seminars, Technology Show-offs, Body Crashing, and much more. Experimental in nature some where positively received and some where disasters. But one stands out as the biggest success; the WiLD Demo competition. The response for this was tremendous and every year since it's introduction the productions have become more and more amazing, ground breaking and defining state of the art of demo scene productions.

The scene have shown a growing interest in computer networking and The Party have since 1994 offered network connectivity to visitors. This years network service exceeds by far anything ever made to demo party; a 3000 node structured network, 1.2GB backbone between halls, internet access, online competition contribution and voting, huge file servers and much more.

Events

Party Bowling

Guests at The Party 1997 will of course have the possibility of bowling for free during The Party. This event takes place Saturday the 27th December from 20.00 CET to 24.00 CET. There will of course be a prize for the guest who's best at bowling... All you have to do is to show up in the Bowling Center - situated 500 meters from The Party Place (See map) – and show your party bracelet.

The Rave 1997

7 DJ's with relation to the demo scene goes crazy in an insane rave show with no limits. Full speed show with no break for 5 hours. The ultimate event for techno freaks. A huge sound and light show will give you the ultimate rave experience in the sleeping hall. The show will be a mix of live performance from synthesizers and computers alternating with record mixing. The DJ's and musicians are from various countries in Europe. Sound and light sponsored by N.C. Elektronic.

Usefull Monitor

A new competition in the most beautiful/ugly categori. This time we have set our mind up to find the most usefull monitor, read; the most alternative use of a monitor. So if you have rebuild your monitor to function as an aquarium, a toolbox, a safety helmet, a suitcase, a mirror on anything else crazy, then let the information crew know about it.

Discount :

2 x 1½ L Coca-Cola..... 29.95 + deposit

3 x „Haribo“..... 26.95



**Vestre boulevard 21
9600 Aars**

Vi gør idé til virkelighed.

Events

Windows 95 Demo

Yet another demo competition. Realizing that the most widely used operating system is Windows 95 it only makes sense to produce demos for this environment. While the hardware is the same as for traditional PC demo, the style of coding is completely different; all direct hardware must be avoided.

Java Demo

The scene is always the first to make the best use of new hardware and technologies. Not surprisingly the interest for coding java and using it's virtual machine as the platform opens up a brand new world and methodology and demo making. Expectations in Java Demo are low compared to established demo productions, but the concept of playing demos in a web browsers is new and exciting. Wait and see, the scene will probably surprise us all again by showing a creative use of this new technology.

Macro Vision Conference

The Macro Vision Crew will be talking about their products in video/laserdisc decoding and decrypting. Products that are easily built without large investments. The Macro Vision conference is a "one time only" event which will last about two hours. The conference will be held in the conference room in hall 1.

Surprise competitions

During The Party 1997 we will announce a lot of weird and funny surprise competitions. Everyone is allowed to take part in these. The surprise competitions will be announced 6 - 8 hours before the competition actually takes place. They will be announced at the big screen and on different bulletin boards. Here you can also see how you take part in the actual competition. If you have to sign up for the event, you must go to the information when you have decided to compete. First come, first served...

Coca Cola Body Crashing

You know the rules already: drink the magic potion as fast as possible. Can you break the record from 1994: 1 1/2 litres of CocaCola down the throat in just 47 seconds!

Events

Light, camera and action

Making sure everybody can enjoy the productions on the big screen, on time and looking good, is no small task. This year a lot of planning and training has been going on for the last few months, and we hope it can be seen. And now for the tech stuff - we will be using 4 bigscreen projectors, one in each hall and ofcourse one in the laserdisc room. The projector in the main hall is the new Barcodata 9200 which is 40% brighter than the one we used last year. Everything that goes on the big screen, is also transmitted to the bigscreens in hall 2 and 3 and to the televisions in the information booth. To deliver the video we are using the panasonic MX50 video mixer, 5 video recorders (VHS/SVHS/DV/Betacam SP), 2 Amiga's, 3 PC's and a Microsphere videoediting system from scitex to create and playback information and demoshows in between the competitions. For the audio we use a DDC SC3 24+8 channel mixer and believe it or not we actually use all channels. For audio only we use minidisc, CD and wireless microphones. In the laserdisc room we are using the new Sony S500 projector which makes an excellent picture. A true dolby prologic surround decoder, 6 EV SX200 loudspeakers and a reinforcement of the roof in the laserdisc room should make it quite interesting.

Party TV

The Party TV is a web based TV channel which will be broadcasting during the entire party. If you wish to view the channel, the only thing you need is a RealVideo / Netshow plugin for your webbrowser. Don't hesitate to ask the network crew if you have problems connecting.

The web-TV channel will broadcast all events and in between there will be interview's with sceners, behind the scenes and crazy events.

Access to the web-tv channel can be found on The Party's website which can be accessed both locally and from the internet, so now you know - your parents might be watching you.

The web-tv channel will be run by profesional people from Nordjyllands medicenter's AMU section, which is an educational center for broadcasting technicians. The major competitions and events will be taped for use by TV stations and for the production of a party videotape.

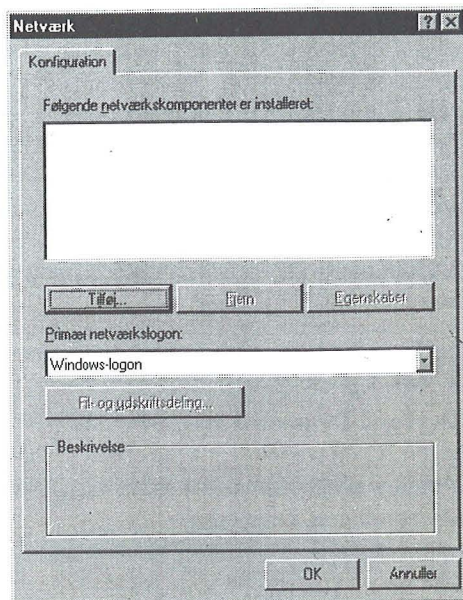
Network Installation

Installation of network interface cards

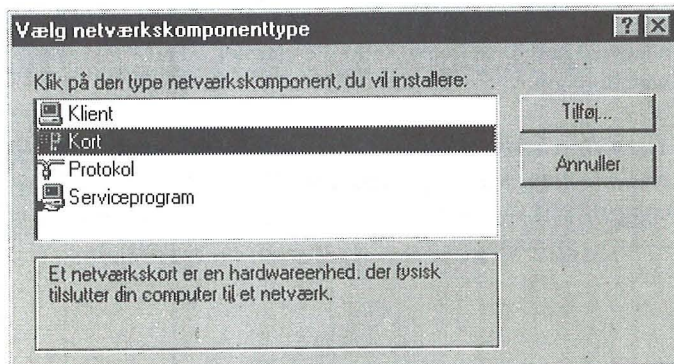
1. Make sure the network interface card is correctly installed in the computer and that the card is connected to the network through the twisted pair connector. Read more in the section about network interface cards.

2. Open Control Panel and select Network.

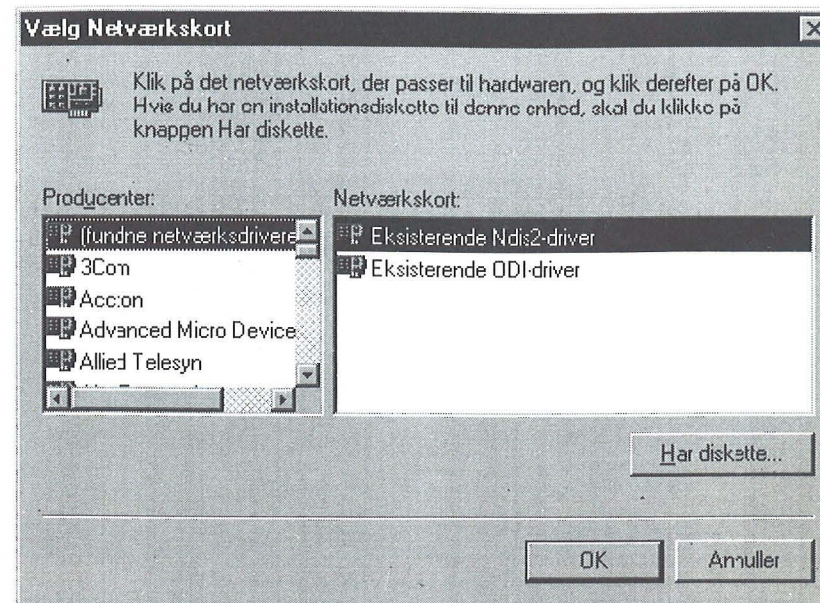
3. If a network interface card appears on the list of installed network components, then skip to "Installation of TCP/IP". If the list is empty as shown above, then press Add.



4. Select Adapter and the press Add.



Network Installation



5. From the list select the installed network interface card or click on Have Disk, insert the floppy disk from the manufacturer and follow the instructions on the screen.

1½ L Coca-Cola
Toast Bread

13,95+deposit
5,50

+ 18000 Other articles.

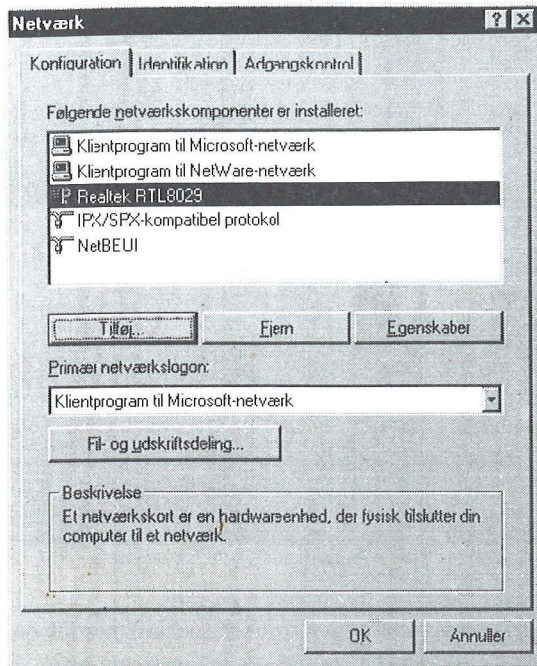
All you need, under one roof.
Open : 9-19 Saturday 9-16

Kvickly

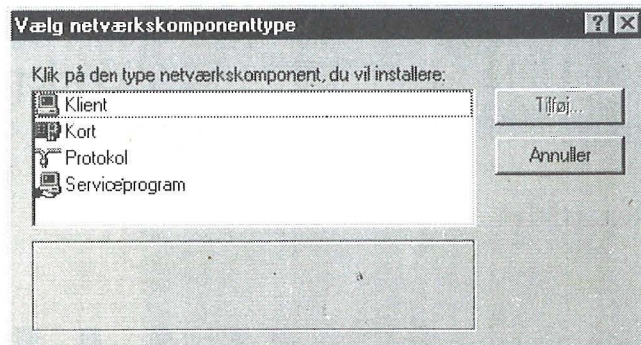
Network Installation

Installation of TCP/IP

1. Open Control Panel and select Network.

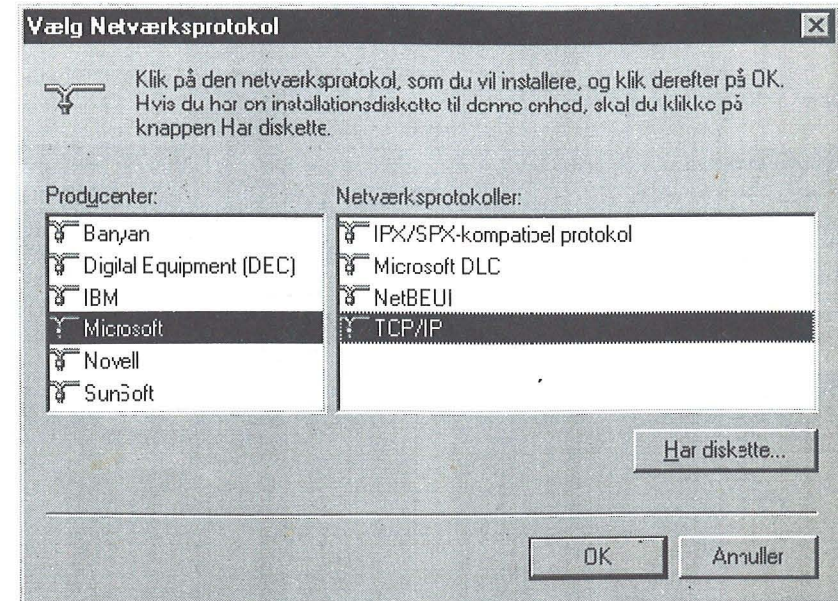


2. If the TCP/IP protocol doesn't appear on the list of install network components, then press Add. Otherwise skip to "Configuration of TCP/IP".



3. Select Protocol and press Add.

Network Installation



4. Select Microsoft from the Manufacturers list and then TCP/IP from the Network Protocols list. Press OK to let Windows95 install the protocol.

The Party T - Shirts

Standard The Party forever T-shirt DKK 75,-
Super special 1997 edition DKK 125,-

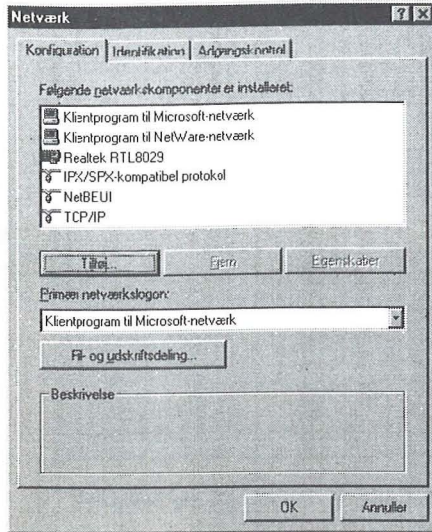
Standard The Party forever T-shirt DKK 75,-
Super special 1997 edition DKK 125,-

Standard The Party forever T-shirt DKK 75,-
Super special 1997 edition DKK 125,-

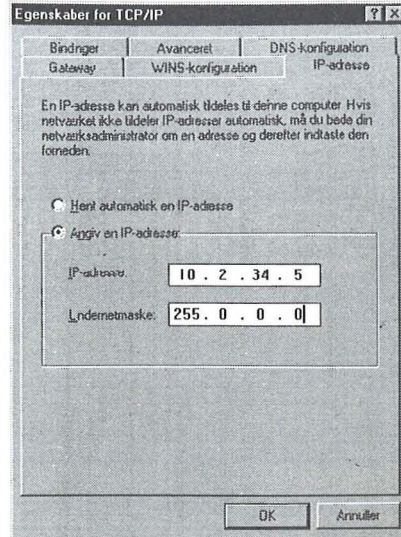
Network Installation

Configuration of TCP/IP

1. Open Control Panel and select Network.



2. Select TCP/IP and press Properties.



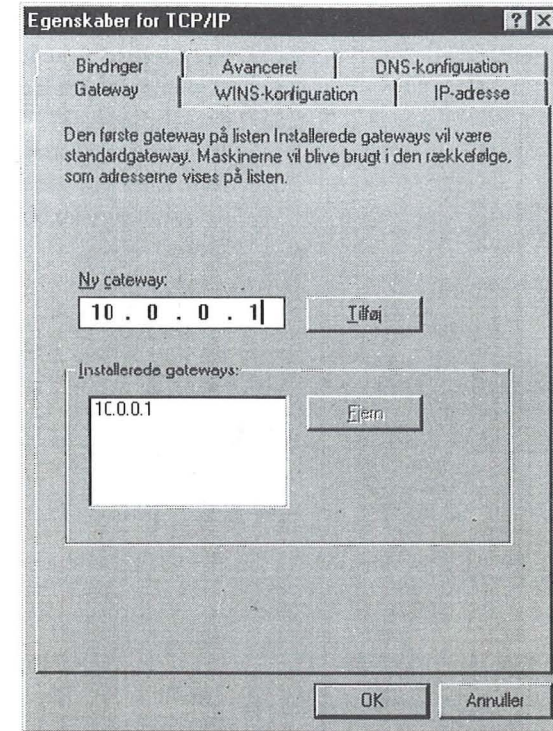
3. Press the IP Address tab and select "Specify Ip address"

4. Attached to each table you'll find a note listing a IP address for each seat. On the note there is also a list of extra IP addresses. Find the IP address assigned to your seat and write this number in the field IP Adress.

Your IP Address consists of 4 numbers, the first one must be 10, the next two is you table number, and the last one is your seat number. If you're seated at table 234 seat 5, then your IP address is 10.2.34.5. If you need more than one number, for example for a server, you must select one from the list of extra numbers on the note on the table, and overstrike the number on the list to make sure that nobody else will use it.

The Subnet Mask should be set to 255.0.0.0

Network Installation



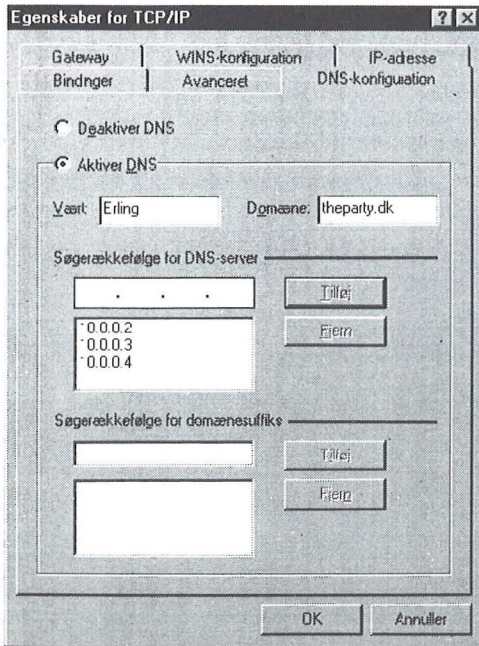
5. On the Gateway tab write the number 10.0.0.1 and press Add.

Network sponsored by :

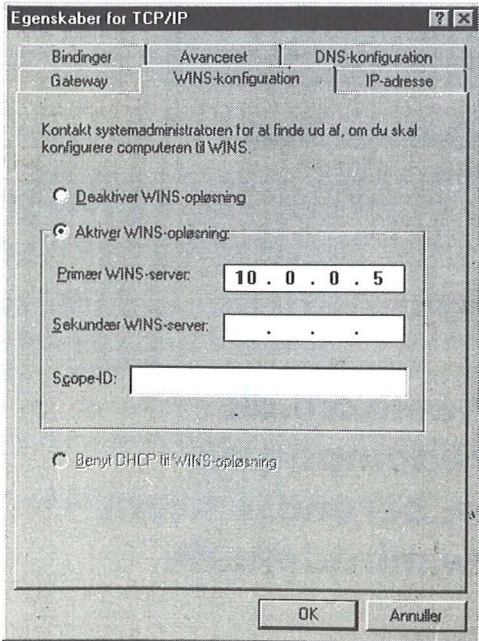
Olicom
Compaq
Berendsen
Mira Data

www.olicom.dk
www.compaq.dk
www.berendsen.com
www.miradata.dk

Network Installation



6. Go into the DNS configuration tab and select Enable DNS. You can choose any name to write in the Host field, for example you handle. The domain must say "theparty.dk". Write 10.0.0.2 in the DNS Server Search Order and press Add. This will add the number to the list below. Add 10.0.0.3 and 10.0.0.4 in a similar way.



7. On the WINS Configuration tab select Enable WINS Resolution and write 10.0.0.5 in the Primary WINS Server field.

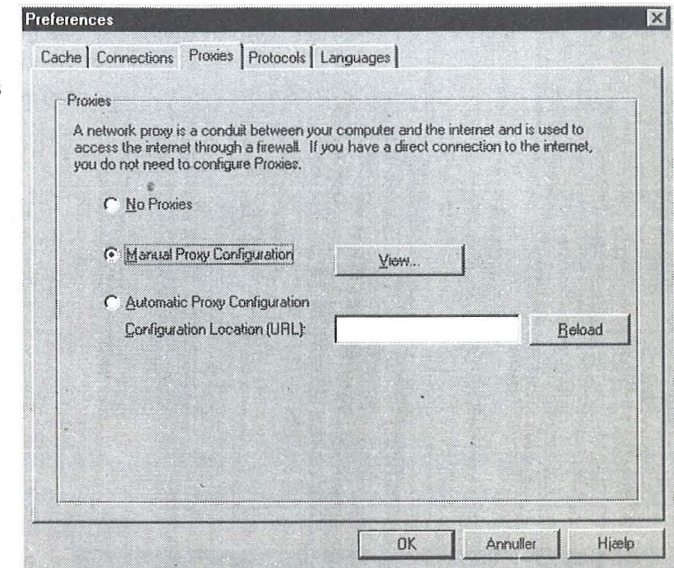
Network Installation

Proxy Configuration

Netscape 3.x

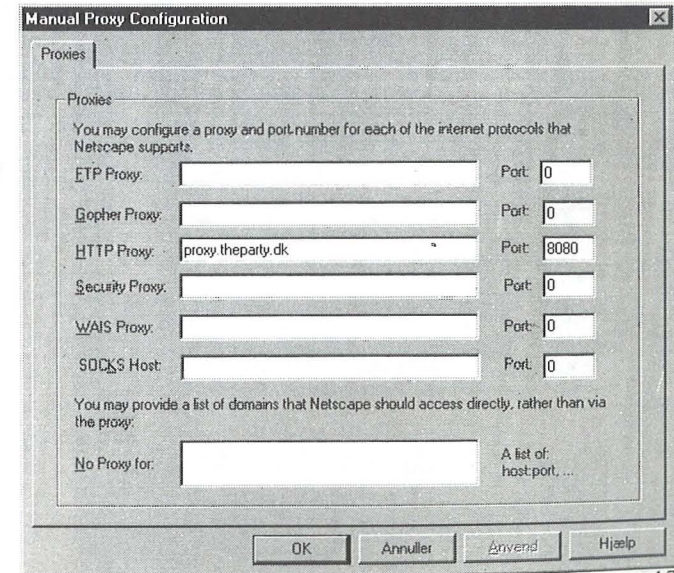
1. In the menu Option select Network Preferences.

2. On the Proxies tab select Manual Proxy Configuration and press View.



3. Write proxy.theparty.dk as HTTP and FTP Proxy and write 8080 in the associated port number field.

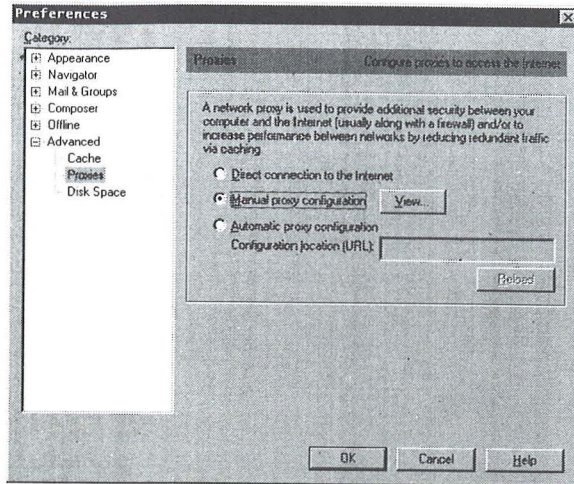
Select „OK“ all the way out.



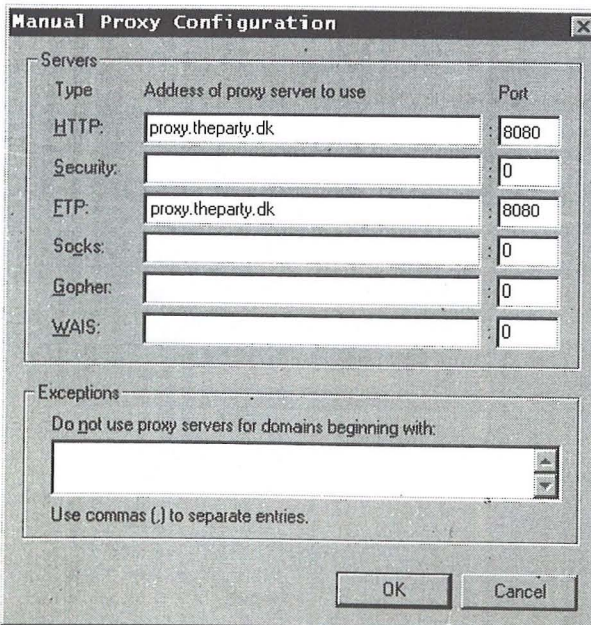
Network Installation

Netscape 4.x

1. In menu „View“ select „Preferences...“



2. In the window that appears select Advanced from the Category field and the Proxies. Select Manual proxy configuration and press View.

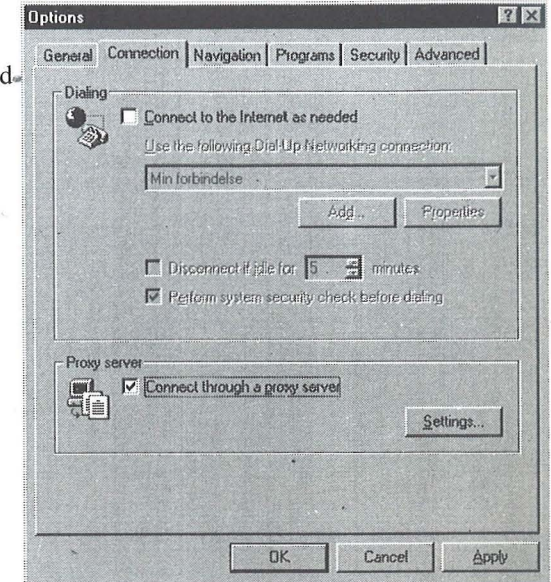


3. Write proxy.theparty.dk as HTTP and FTP Proxy and write 8080 in the associated port number field.

Network Installation

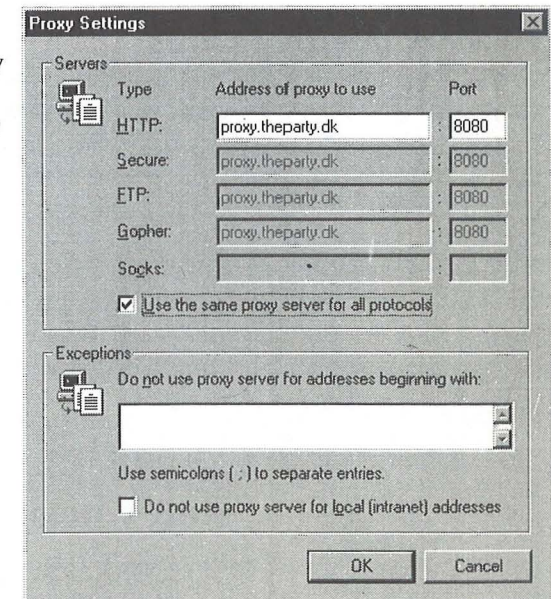
Internet Explorer 3.x

1. In menu View select Options...



2. In the Connection fan check the Connect through a proxy server field and press Settings.

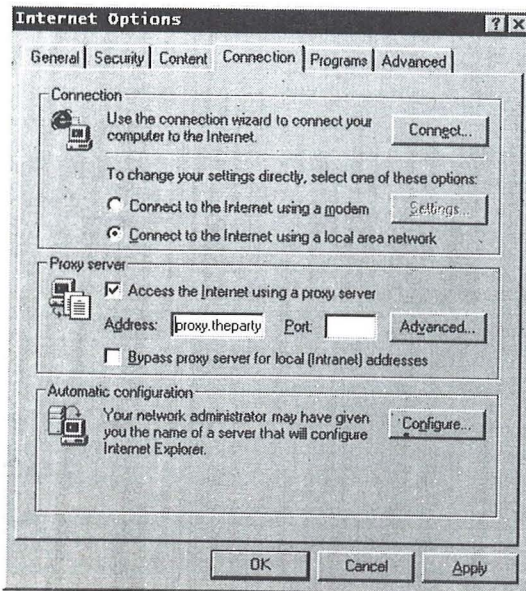
3. Write proxy.theparty.dk in the HTTP field under Address of proxy to use and select port 8080. Check the field Use the same proxy server for all protocols.



Network Installation

Internet Explorer 4.x

1. In menu View select Internet Options...



2. In the Connection fan check the Connect Access the Internet using a proxy server field. Write proxy.theparty.dk in the Address field and write 8080 in the port field.

Network Interface Cards

This year we only offer Twisted Pair network connections. Twisted pair is often abbreviated TP. The connector on your network interface card looks like a female phone connector, but is a little bit wider. To connect you must use a TP cable; it has male connectors in both ends where the connector fits into your computer and the hub which is mounted under the tables. A hub is a box which connects network interface cards to each other.

All hubs have link lights which light up if you have proper cable connection. Sometimes a link is not established before the right drivers are loaded in windows; it depends on which kind of network interface card you're using.

To unmount the cable press the small plastic tab on the connector. The cable will slip out easily when you press it.

If you have any problems -
don't hesitate -
ask the network helpers

Network Overview

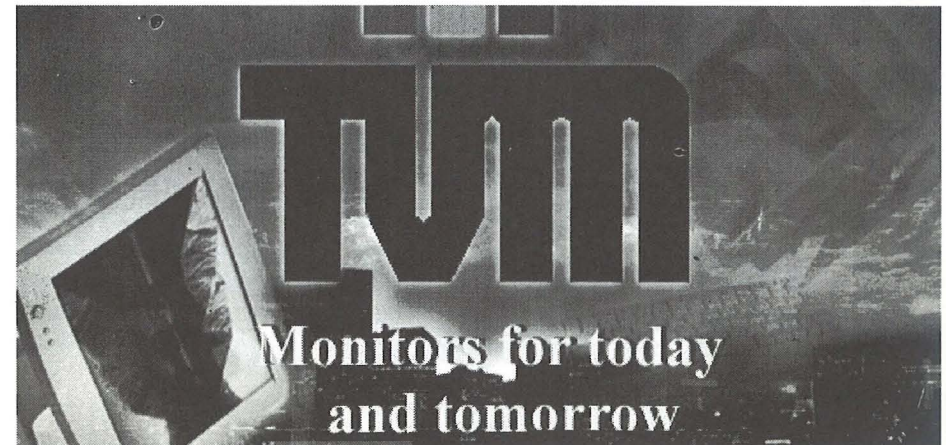
Olicom (www.olicom.dk) has agreed to sponsor the backbone network and half the needed hubs for the tables. The rest is supplied by Mira Data og Berendsen Components.

Briefly the backbone will be a 622Mbit ATM, with links to 10Mbit Ethernet switches where all the hubs on the tables will be connected. This means that only Twisted Pair connections will be available on the tables. The network will be based on 6 x OC-9100 16 ports ATM switches with 2.4 Gbit backbone. 15 x 20 ports ethernet switches with fiber uplink, and 220 x 16 ports 10 mbit hubs.

There will be 2 interconnected switches in each hall. This will give an effective backbone bandwidth of 2.4 Gbit.

We have the following Compaq servers :

ProLiant 7000 - 128 Mb memory - 200 Mhz Pentium Pro - 6 x 4,3 GB Raid
ProLiant 5500 - 320 Mb memory - 3 x 200 Mhz Pentium Pro - 5 x 4,3 GB Raid
ProLiant 3000 - 128 Mb memory - 300 Mhz Pentium-II - 5 x 2,1 GB Raid
ProLiant 1600 - 64 Mb memory - 266 Mhz Pentium-II - 3 x 4,3 GB Raid
ProLiant 800 - 96 Mb memory - 200 Mhz Pentium - 2,1 GB harddisk



For more information contact Mira Data A/S:
Phone: +45 9744 3500 * e-mail: sales@miradata.dk
www.tvn.dk * www.miradata.dk



Competitions

Rulez

If you want to take part in a competition you must be present at The Party during the presentation and prize ceremony.

If too many contributions are delivered for a competition a competent jury will make a selection.

All contributions can only participate in one competition.

We will copy and spread all contributions.

All contributions must be final, no bug-fixes will be accepted before or after presentation.

Compo-disks will not be returned.

PC hardware configuration: Pentium 166 MHz, 16 MB ram, SVGA by VESA 1.2 Support (VESA 2.0 with SDD/UniVbe), Soundblaster AWE 32 or Gus Max.

Amiga hardware configuration: Amiga XX060 50 MHz, 8 MB FAST ram & 2 MB CHIP ram. Amiga productions must also work on 030 50MHz. All entries for Amiga can be compressed with either LZX or LHA.

All entries for PC can be compressed with either ZIP, ARJ or RAR. No self-extracting archives will be allowed. No other archive-types will be allowed.

All filenames must comply to ISO-9660 8+3 standard. No funny characters allowed.

All contributions must be able to run from HD and CDROM, except for WiLD! demos.

Contributions with racial content (incl. anti-racial) will not be accepted

Deadlines

Can be found on <http://www.theparty.dk>

VOTEKEY
2453.UQEV8R8XHDJ9.TP7

Competitions

Contribution delivery

The best way to deliver contributions for the competitions is to use the online services. Voting only runs online. Before you can use these services you need an account in our member service called The Scene. You might already have created it before arriving here, if you have reserved a table your account is definitely already created.

If your account is not created yet, point your browser to <http://www.theparty.dk/cgi-bin/thescene.cgi> and click on Create Account.

Choose a unique handle and on the next page write information about yourself and how we can contact you. This information is only used by The Party and will never be handed over to anyone. The address should be complete, separate lines by ; (semicolon). Passwords are stored in encrypted form, and not accessible by organizers or anyone else. The characters ' (apostrophe) and \ (backslash) are unfortunately not allowed in any field under The Scene.

You can at any time go back and edit your user specs or even delete your account again. When the user creation process is completed you will be presented a menu giving access to online services and a news scroller will appear in the bottom of the page. Keep an eye on this one for up-to-the-minute party updates.

Voting

Log into The Scene and select Online Voting. Enter the votekey, which appears on a sticker in this folder. You will only have to enter this key once, and please do it as soon as possible after arrival. Never hand your folder over to anyone before you have entered the votekey. If you wish not to participate in voting, please return this folder to the information desk. Never hand it over to anyone asking for it, not even organizers.

On the voting page enter for each competition the entry numbers you wish to vote for. Your votes are weighted, so choose carefully which entries you wish to rate first, second, third, fourth and fifth. You cannot vote for the same entry number twice in the same competition. You can refine your votes as many times as you wish. Old votes are written in parentheses next to the input fields. Only write something in the fields if you wish to change what is already submitted. To delete an entry write a 0 (zero).

Voting is no longer possible after voting deadline, so make sure all your votes are submitted in time.

Competitions

Prizes

PC-Demo	Wild Demo	Amiga Demo
\$2000	\$2500	\$2000
\$1000	\$1250	\$1000
\$500	\$750	\$500
\$250	\$500	\$250
\$100	\$250	\$100
Java Demo	Multi Ch.	Win 95
\$1000	\$600	\$150
\$750	\$400	\$100
\$500	\$200	\$50
	\$100	
PC - intro	4-Ch. Music	Amiga Intro
\$500	\$600	\$500
\$300	\$400	\$300
\$150	\$200	\$150
	\$100	
Pc 4 KB Intro	C64 Demo	Amiga 4 KB Intro
\$400	\$300	\$400
\$200	\$200	\$200
\$100	\$100	\$100
	\$100	
Pixel Gfx	C64 Music	Raytraced Gfx
\$600	\$200	\$400
\$400	\$200	\$200
\$200	\$100	\$100
\$100	\$50	\$50
	C64 Gfx	
	\$200	
	\$100	
	\$50	

Local Sponsor

Panik!!

Vi Har Det du mangler til The Party !!

*I anledning af The party holder vi ekstra åbent
.Så gå ikke i panik- Gå i Labtech Data*

Lørdag 10.00 - 16.00

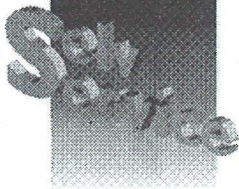
Søndag 10.00 - 16.00

ALT I TILBEHØR TIL THE PARTY.

LABTECH DATA
Himmerlandsgade 83
9600 Aars
98621212

Local sponsor

VELKOMMEN TIL PC-SPAREKASSEN HOMEBANKING - GRATIS TILSLUTNING



 Sparekassen
HIMMERLAND
-Mark of local!

Sparekassen Himmerland tilbyder alle med computer helt nye muligheder. Med PC-Sparekassen/ Homebanking kan du åbne din egen "sparekasse" hjemme. Denne service er meget let at bruge. Og det koster intet at blive tilsluttet.

PC-Sparekassen giver direkte adgang til dine egne konti i Sparekassen Himmerland. Samtidig er du mindre afhængig af de normale åbningstider, for PC-Sparekassen har åben således:

- ◆ Hverdage kl. 06.00 - 02.00
- ◆ Weekends kl. 06.00 - 22.00

- PC-Sparekassen giver bl.a. følgende muligheder:
- ◆ Overføre beløb mellem konti
 - ◆ Betale regninger
 - ◆ Betale girokort og andre indbetalingskort
 - ◆ Udskrive kontoudskrift
 - ◆ Forespørgsler (f.eks. saldo, bevægelser, kontooversigt, valutakurser m.v.)
 - ◆ Programmer (f.eks. budget, skat, låneberegning m.v.)

Kom ind i Sparekassen Himmerland og hør nærmere.

Map

