



Sun™ MTP J3270 User's Guide

Release 8.0

Sun Microsystems, Inc.
www.sun.com

Part No. 816-5339-13
January 2004, Revision A

Submit comments about this document at: <http://www.sun.com/hwdocs/feedback>

Copyright 2004 Sun Microsystems, Inc., 4150 Network Circle, Santa Clara, California 95054, U.S.A. All rights reserved.

Sun Microsystems, Inc. has intellectual property rights relating to technology that is described in this document. In particular, and without limitation, these intellectual property rights may include one or more of the U.S. patents listed at <http://www.sun.com/patents> and one or more additional patents or pending patent applications in the U.S. and in other countries.

This document and the product to which it pertains are distributed under licenses restricting their use, copying, distribution, and decompilation. No part of the product or of this document may be reproduced in any form by any means without prior written authorization of Sun and its licensors, if any.

Third-party software, including font technology, is copyrighted and licensed from Sun suppliers.

Parts of the product may be derived from Berkeley BSD systems, licensed from the University of California. UNIX is a registered trademark in the U.S. and in other countries, exclusively licensed through X/Open Company, Ltd.

Sun, Sun Microsystems, SunSolve, the Sun logo, AnswerBook2, docs.sun.com, Java, and Solaris are trademarks or registered trademarks of Sun Microsystems, Inc. in the U.S. and in other countries.

All SPARC trademarks are used under license and are trademarks or registered trademarks of SPARC International, Inc. in the U.S. and in other countries. Products bearing SPARC trademarks are based upon an architecture developed by Sun Microsystems, Inc.

The OPEN LOOK and Sun™ Graphical User Interface was developed by Sun Microsystems, Inc. for its users and licensees. Sun acknowledges the pioneering efforts of Xerox in researching and developing the concept of visual or graphical user interfaces for the computer industry. Sun holds a non-exclusive license from Xerox to the Xerox Graphical User Interface, which license also covers Sun's licensees who implement OPEN LOOK GUIs and otherwise comply with Sun's written license agreements.

U.S. Government Rights—Commercial use. Government users are subject to the Sun Microsystems, Inc. standard license agreement and applicable provisions of the FAR and its supplements.

DOCUMENTATION IS PROVIDED "AS IS" AND ALL EXPRESS OR IMPLIED CONDITIONS, REPRESENTATIONS AND WARRANTIES, INCLUDING ANY IMPLIED WARRANTY OF MERCHANTABILITY, FITNESS FOR A PARTICULAR PURPOSE OR NON-INFRINGEMENT, ARE DISCLAIMED, EXCEPT TO THE EXTENT THAT SUCH DISCLAIMERS ARE HELD TO BE LEGALLY INVALID.

Copyright 2004 Sun Microsystems, Inc., 4150 Network Circle, Santa Clara, Californie 95054, Etats-Unis. Tous droits réservés.

Sun Microsystems, Inc. a les droits de propriété intellectuelle relatants à la technologie qui est décrit dans ce document. En particulier, et sans la limitation, ces droits de propriété intellectuelle peuvent inclure un ou plus des brevets américains énumérés à <http://www.sun.com/patents> et un ou les brevets plus supplémentaires ou les applications de brevet en attente dans les Etats-Unis et dans les autres pays.

Ce produit ou document est protégé par un copyright et distribué avec des licences qui en restreignent l'utilisation, la copie, la distribution, et la décompilation. Aucune partie de ce produit ou document ne peut être reproduite sous aucune forme, par quelque moyen que ce soit, sans l'autorisation préalable et écrite de Sun et de ses bailleurs de licence, s'il y en a.

Le logiciel détenu par des tiers, et qui comprend la technologie relative aux polices de caractères, est protégé par un copyright et licencié par des fournisseurs de Sun.

Des parties de ce produit pourront être dérivées des systèmes Berkeley BSD licenciés par l'Université de Californie. UNIX est une marque déposée aux Etats-Unis et dans d'autres pays et licenciée exclusivement par X/Open Company, Ltd.

Sun, Sun Microsystems, SunSolve, le logo Sun, AnswerBook2, docs.sun.com, Java, et Solaris sont des marques de fabrique ou des marques déposées de Sun Microsystems, Inc. aux Etats-Unis et dans d'autres pays.

Toutes les marques SPARC sont utilisées sous licence et sont des marques de fabrique ou des marques déposées de SPARC International, Inc. aux Etats-Unis et dans d'autres pays. Les produits portant les marques SPARC sont basés sur une architecture développée par Sun Microsystems, Inc.

L'interface d'utilisation graphique OPEN LOOK et Sun™ a été développée par Sun Microsystems, Inc. pour ses utilisateurs et licenciés. Sun reconnaît les efforts de pionniers de Xerox pour la recherche et le développement du concept des interfaces d'utilisation visuelle ou graphique pour l'industrie de l'informatique. Sun détient une licence non exclusive de Xerox sur l'interface d'utilisation graphique Xerox, cette licence couvrant également les licenciées de Sun qui mettent en place l'interface d'utilisation graphique OPEN LOOK et qui en outre se conforment aux licences écrites de Sun.

LA DOCUMENTATION EST FOURNIE "EN L'ÉTAT" ET TOUTES AUTRES CONDITIONS, DECLARATIONS ET GARANTIES EXPRESSES OU TACITES SONT FORMELLEMENT EXCLUES, DANS LA MESURE AUTORISEE PAR LA LOI APPLICABLE, Y COMPRIS NOTAMMENT TOUTE GARANTIE IMPLICITE RELATIVE A LA QUALITE MARCHANDE, A L'APTITUDE A UNE UTILISATION PARTICULIERE OU A L'ABSENCE DE CONTREFAÇON.



Adobe PostScript

Contents

Preface vii

1. Installing Sun MTP J3270 1

Prerequisites 1

Installing Sun MTP J3270 2

▼ To Install Sun MTP J3270 on Solaris and UNIX Systems 2

▼ To Install Sun MTP J3270 on Windows Systems 2

2. Using Sun MTP J3270 3

Starting Sun MTP J3270 3

▼ To Start Sun MTP J3270 on Solaris and UNIX Systems 3

▼ To Start Sun MTP J3270 on Windows Systems 4

Command Line Parameters 4

3270 Emulator Window 7

The Menu Bar 8

The Emulator 9

The Status Bar 9

Connecting to a 3270 System 10

▼ To Connect to a Host 10

Copy and Paste	12
Selecting an Area to Copy	12
Color Schemes	13
▼ To Select a Color Scheme	14
User-Defined Color Schemes	14
Specifying Keyboard Mapping	15
▼ To View the Current Key Mapping	15
▼ To Change the Current Key Mapping	15
▼ To Restore the Key Mapping to the Default Values	16
Resizing Sun MTP J3270	16
Diagnostic Information	16
Using Sun MTP J3270 in DBCS Mode	17
Available 3270 Field Types	17
Restrictions on a Pure Single-Byte Field	17
Restrictions on a Pure Double-Byte Field	17
Restrictions on Mixed (SOSI) Fields	18
Making an Association With an Internet Browser	18
Accessibility Features of Sun MTP J3270	19
Index	21

Figures

FIGURE 2-1	Disconnected Emulator	7
FIGURE 2-2	Menu Bar	8
FIGURE 2-3	Status Bar	9
FIGURE 2-4	Emulator Connect Window	11

Preface

This document describes how to install and use Sun™ MTP J3270 software. Sun MTP J3270 is a 3270 terminal emulator that provides support for 3278 models 2, 3, 4, and 5 in both extended and non-extended mode. Sun MTP J3270 allows you to connect to any Telnet 3270 (TN3270) server, such as Sun MTP running the `unikixtnemux` server.

How This Book Is Organized

[Chapter 1](#) describes how to install the software.

[Chapter 2](#) describes how to start and use the software.

Using UNIX Commands

This document does not contain information on basic UNIX® commands and procedures such as shutting down the system, booting the system, and configuring devices. See the following for this information:

- Software documentation that you received with your system
- Solaris™ operating environment documentation, which is at <http://docs.sun.com>

Typographic Conventions

Typeface ¹	Meaning	Examples
AaBbCc123	The names of commands, files, and directories; on-screen computer output	Edit your <code>.login</code> file. Use <code>ls -a</code> to list all files. % You have mail.
AaBbCc123	What you type, when contrasted with on-screen computer output	% su Password:
<i>AaBbCc123</i>	Book titles, new words or terms, words to be emphasized. Replace command-line variables with real names or values.	Read Chapter 6 in the <i>User's Guide</i> . These are called <i>class</i> options. You <i>must</i> be superuser to do this. To delete a file, type <code>rm filename</code> .

¹ The settings on your browser might differ from these settings.

Shell Prompts

Shell	Prompt
C shell	<i>machine-name%</i>
C shell superuser	<i>machine-name#</i>
Bourne shell and Korn shell	\$
Bourne shell and Korn shell superuser	#

Accessing Sun Documentation

You can view, print, or purchase a broad selection of Sun documentation, including localized versions, at:

<http://www.sun.com/documentation>

Contacting Sun Technical Support

If you have technical questions about this product that are not answered in this document, go to:

<http://www.sun.com/service/contacting>

Sun Welcomes Your Comments

Sun is interested in improving its documentation and welcomes your comments and suggestions. You can submit your comments by going to:

<http://www.sun.com/hwdocs/feedback>

Please include the title and part number of your document with your feedback:

Sun MTP J3270 User's Guide, part number 816-5339-13

Installing Sun MTP J3270

This chapter describes how to install the Sun MTP J3270 software.

Check the SunSolveSM Web site on a regular basis for any Sun MTP J3270 patches that are available, and apply the recommended patches:

<http://sunsolve.sun.com>

Prerequisites

For each Sun Mainframe Transaction Processing software (Sun MTP) region you wish to connect to with Sun MTP J3270, you must configure the `unikixtnemux` TN3270 server. Refer to the *Sun Mainframe Transaction Processing Software Configuration Guide* for instructions.

Sun MTP J3270 is written in the JavaTM programming language. You must use at least the Java 1.4 runtime environment (JRE) at runtime. You can obtain a JRE for your platform at:

<http://java.sun.com>

Note – If you install the Windows InstallShield version of Sun MTP J3270, the JRE is included in the package.

Installing Sun MTP J3270

This section describes how to install Sun MTP J3270 on Solaris platforms and on Windows systems. Sun MTP J3270 is distributed in the following formats for different platforms on the client CD-ROM:

- A *.zip file is for use on Solaris and UNIX systems.
- A *.exe file is an InstallShield executable for Windows systems.

If you download a patch release, be sure to select the correct format for your hardware platform.

▼ To Install Sun MTP J3270 on Solaris and UNIX Systems

1. **Locate the *.zip file that contains the Sun MTP J3270 software.**
2. **Use the zip command to uncompress the archive under the desired directory.**
Refer to the ZIP(1) man page for information about command options.

▼ To Install Sun MTP J3270 on Windows Systems

1. **Locate the *.exe file that contains the Sun MTP J3270 software.**
2. **Start the installation using either method:**
 - Double-click the *.exe file.
 - On the Windows desktop, select Start → Run, type the name of the Sun MTP J3270 executable, and click OK.
3. **Follow the on-screen directions to complete the installation, making sure to select the desired installation location.**

When the installation is complete, you can start Sun MTP J3270. See [“Starting Sun MTP J3270” on page 3](#).

Note – You can use Sun MTP J3270 without having to reboot your system.

Using Sun MTP J3270

This chapter covers the following topics:

- [“Starting Sun MTP J3270” on page 3](#)
- [“Command Line Parameters” on page 4](#)
- [“3270 Emulator Window” on page 7](#)
- [“Connecting to a 3270 System” on page 10](#)
- [“Copy and Paste” on page 12](#)
- [“Color Schemes” on page 13](#)
- [“Specifying Keyboard Mapping” on page 15](#)
- [“Resizing Sun MTP J3270” on page 16](#)
- [“Diagnostic Information” on page 16](#)
- [“Using Sun MTP J3270 in DBCS Mode” on page 17](#)
- [“Making an Association With an Internet Browser” on page 18](#)
- [“Accessibility Features of Sun MTP J3270” on page 19](#)

Starting Sun MTP J3270

This section describes how to start Sun MTP J3270 on various platforms.

▼ To Start Sun MTP J3270 on Solaris and UNIX Systems

1. **Change to the `bin` directory of the Sun MTP J3270 installation, or verify that the `bin` directory is in your path.**
2. **Type the `j3270` command with or without parameters.**
See [“Command Line Parameters” on page 4](#).

▼ To Start Sun MTP J3270 on Windows Systems

- Use one of the following methods:

- On the Windows Start menu, select Start → Programs → Sun MTP J3270 8.0.0 → 3270 Terminal.
- Create a Windows shortcut to start the `j3270.exe` program.
- If you are in the Sun MTP J3270 `bin` directory or if the Sun MTP J3270 `bin` directory is in your path, type `j3270`.

With all of these methods, you can specify startup parameters. You can modify the properties of the Start button entry for the 3270 Terminal or the properties of a shortcut you created. At a command prompt, specify the options on the command line. “[Command Line Parameters](#)” on page 4 describes these parameters.

Command Line Parameters

You can start Sun MTP J3270 with a set of parameters. Supplying a URL or host and port causes the emulator to automatically attempt a connection to the specified host.

Format

```
j3270 [-h hostname [-p portnumber]] | [-u URL] [-m model] [-f font]  
[-n netname] [-t timeout-value] [-s print-style] [-c codepage] [-x]  
[-r [filename]] [-C colorscheme-name]
```

Option	Description
-h <i>hostname</i>	Name of TN3270 server host.
-p <i>portnumber</i>	Port number of TN3270 server. This is the same as the port number specified as the <code>TNServer*ListenPort</code> in the <code>unikixrc.cfg</code> file.
-u <i>URL</i>	TN3270 host and port specified as a URL. For example: <code>tn3270://myserver.com:2002</code>
-m <i>model</i>	Terminal model; valid values are: 2, 2-E, 3, 3-E, 4, 4-E, 5, and 5-E. The default model is 2-E.
-f <i>font</i>	<i>font</i> is in the format <i>name.style.size</i> . For example: <code>-f Monospaced.PLAIN.12.</code>

Option	Description
<code>-n netname</code>	If you allow TN3270E, you can request a specific <i>netname</i> for this terminal.
<code>-t timeout-value</code>	Host inactivity <i>timeout-value</i> in seconds. Sun MTP J3270 automatically disconnects from the host after a period of inactivity. Inactivity is determined from the last time any network activity between the host and Sun MTP J3270 occurred. The default is not to time out, which is the same as specifying <code>-t 0</code> .
<code>-s print-style</code>	<p>Style to use for printing. Valid values are:</p> <ul style="list-style-type: none"> • <code>normal</code>: Print same as appears on screen • <code>whiteonblack</code>: Print in white on a black background • <code>blackonwhite</code>: Print in black on a white background • <code>coloronwhite</code>: Print in color on a white background <p>The default is <code>normal</code>.</p>

Option	Description
-c <i>codepage</i>	<p>Code page to use. One of the following:</p> <ul style="list-style-type: none"> • IBM-037 (US English, Portuguese, Canadian French) • IBM-273 (German) • IBM-277 (Danish, Norwegian) • IBM-278 (Finnish, Swedish) • IBM-280 (Italian) • IBM-284 (Spanish) • IBM-285 (UK English) • IBM-297 (French) • IBM-500 (Belgian, Swiss German) • IBM-870 (Croatian, Czechoslovakian, Hungarian, Polish, Romanian, Serbian Latin, Slovak, Slovene) • IBM-875 (Greek) • IBM-930 (Japanese DBCS) • IBM-933 (Korean DBCS) • IBM-935 (Simplified Chinese DBCS) • IBM-937 (Traditional Chinese DBCS) • IBM-939 (Japanese DBCS) • IBM-1025 (Bulgarian, Macedonian, Serbian Cyrillic, Russian) • IBM-1026 (Turkish) • IBM-1047 (Open edition) • IBM-1140 (US English - Euro) • IBM-1141 (German - Euro) • IBM-1142 (Danish, Norwegian - Euro) • IBM-1143 (Finnish, Swedish - Euro) • IBM-1144 (Italian - Euro) • IBM-1145 (Spanish - Euro) • IBM-1146 (UK English - Euro) • IBM-1147 (French - Euro) • IBM-1148 (Multilingual - Euro) • IBM-1149 (Icelandic - Euro)
-x	Excludes the use of the TN3270E protocol when connecting to the remote system. Only TN3270 is used.
-r [<i>filename</i>]	<p>Identifies the remote animation file to use. The file name is optional. If no file name is specified, Sun MTP J3270 uses the file <i>J3270-directory/etc/animation_command</i>. Remote animation is supported only on Windows platforms.</p>
-C <i>colorscheme-name</i>	<p>Identifies the color scheme to use. The name is either a user-defined color scheme name, or is one of the system-defined color schemes (<code>system:default</code>, <code>system:whiteonblack</code>, or <code>system:blackonwhite</code>). “Color Schemes” on page 13 describes the use of color schemes.</p>

3270 Emulator Window

The emulator window has three parts: the menu bar, the emulator itself, and a status bar.

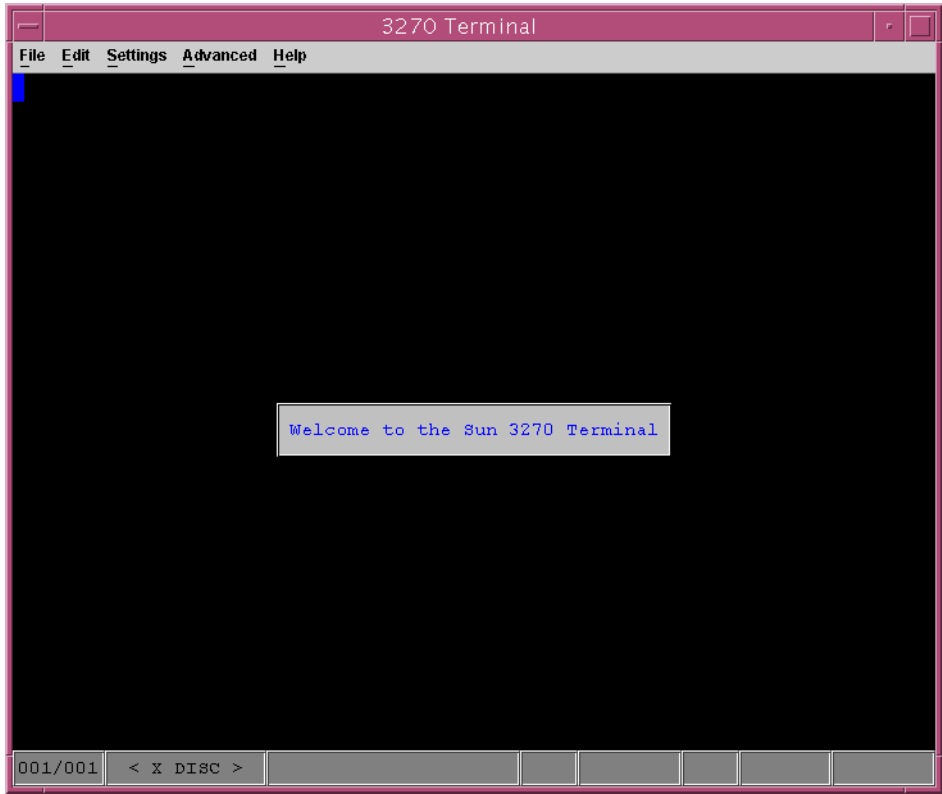


FIGURE 2-1 Disconnected Emulator

The Menu Bar

The emulator's menu bar has five items: File, Edit, Settings, Advanced, and Help.

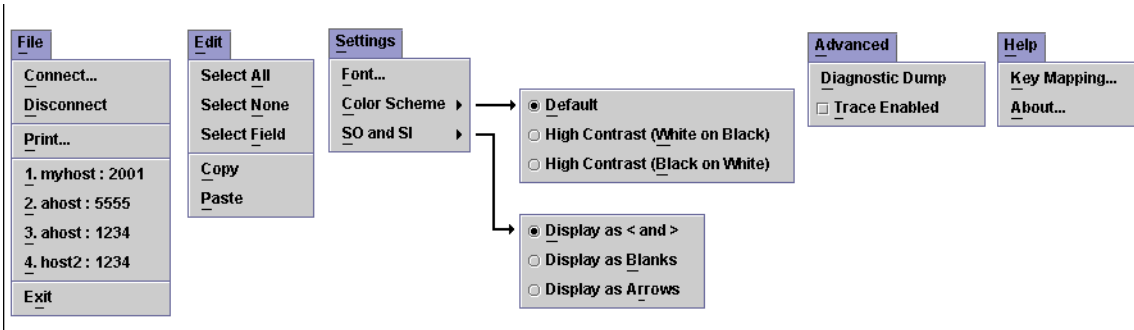


FIGURE 2-2 Menu Bar

The menu bar enables you to:

- Connect to a TN3270 system, if the emulator is in a disconnected state
- Disconnect from the currently connected system, if the emulator is in a connected state
- Print the current display
- Modify the selection to be used in copying to the system clipboard
- Copy the selection to the system clipboard
- Paste the contents of the system clipboard to the emulator
- Change the font of the display
- Change the color settings of the emulator
- Change the way that SO and SI markers are displayed when running in DBCS mode
- Capture diagnostic information
- Display the current keyboard mapping

Note – The Settings → Color Scheme menu displays both the system-defined color schemes and any user-defined color schemes. For information about color schemes, see [“Color Schemes” on page 13](#).

The File menu also displays the last four systems the emulator connected to. When the emulator is disconnected, clicking on one of the systems causes the emulator to attempt to connect to it.

The Emulator

When the emulator is connected, it responds to keyboard input like a standard 3270 terminal. For information on how 3270 keys are mapped to keys on your keyboard, see [“Specifying Keyboard Mapping” on page 15](#).

By default, the terminal does not automatically disconnect (*timeout*) from a system that it is connected to. If you want it to automatically timeout, you must specify a terminal timeout value when starting Sun MTP J3270. See [“Command Line Parameters” on page 4](#) for information about the timeout startup parameter.

The Status Bar

The status bar displays information about the terminal and is divided into sections.

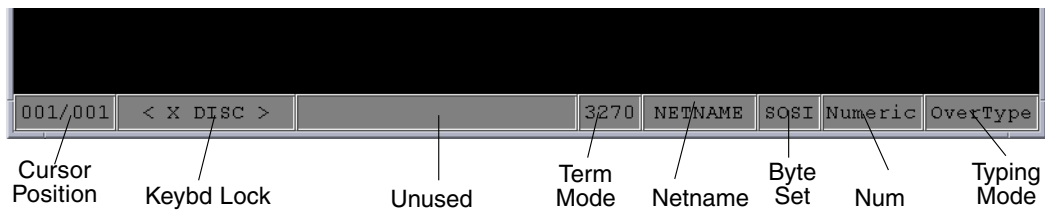


FIGURE 2-3 Status Bar

The labels in [FIGURE 2-3](#) indicate each section of the status bar and are described in the following table:

Label	Description
Cursor Position	Indicates the row and column numbers of the cursor position.
Keybd Lock	Indicates if the keyboard is locked.
Unused	Indicates that this section is not used.

Label	Description
Term Mode	Indicates the terminal mode. Displays 3270, NVT, or SUSP.
Netname	indicates the netname of the terminal, if there is one.
Byte Set	The byte set of the field that the cursor is currently on: either SBCS (pure single byte), SOSI (a combination of single and double byte), or DBCS (pure double byte). These values are displayed only when the host is connected using a double-byte code page. If the terminal is connected using a single-byte code page, this area is blank.
Num	Indicates whether the field is numeric. Displays Numeric if the current field is numeric, or else it is blank.
Typing Mode	Indicates the typing mode. Displays either Insert or OverType.

Connecting to a 3270 System

If you specify the `-h hostname` or `-u URL` parameters when starting Sun MTP J3270, the emulator automatically attempts to connect to the specified host system. If you do not specify the `-h` or `-u` parameters, use the following procedure to connect to a host.

▼ To Connect to a Host

1. **Start Sun MTP J3270 by selecting it on the Start menu or by typing `j3270` at a command prompt.**

The terminal emulator window is displayed.

2. **Select File → Connect to display the Connect window.**

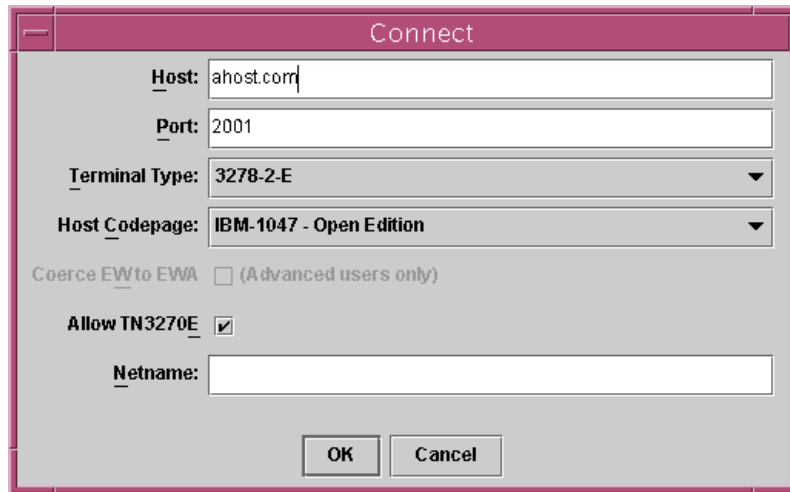


FIGURE 2-4 Emulator Connect Window

3. Set the attributes by typing values in the following fields:

a. In the Host field, type the host name.

b. Type a port number in the Port field; the default is 2001.

This is the same as the port number specified as the `TNServer*ListenPort` in the `unikixrc.cfg` file.

c. Select a terminal type for the Terminal Type field using the drop-down menu; the default is 3278-2-E.

d. Select a code page for the Host Codepage field by using the drop-down menu.

The default is IBM-1047 (Open Edition). The supported code pages are listed in [“Command Line Parameters” on page 4](#).

e. The Coerce EW to EWA field is enabled only for Terminal types 3278-3, 3278-3-E, 3278-4, 3278-4-E, 3278-5, and 3278-5-E.

Some TN3270 servers do not generate correct 3270 datastreams for these terminal types. When you check this box, Sun MTP J3270 displays the screens correctly.

Note – The coerce option is available only on the Connect window. There is no equivalent command line parameter.

f. Check or deselect the Allow TN3270E check box, which allows the use of the TN3270E protocol when connecting to the remote system.

g. Type a value in the Netname field.

If you checked Allow TN3270E, you can request a specific *netname* for the terminal.

4. Click Connect to start the connection process.

A message is displayed if Sun MTP J3270 fails to connect to the specified host. If you connect successfully, the first screen of the 3270 host is displayed.

Note – The last four systems that were connected to, either successfully or unsuccessfully, are displayed on Sun MTP J3270 File menu. Clicking on one of these entries causes Sun MTP J3270 to automatically attempt to connect to that host.

Copy and Paste

The copy action puts data from the selected area on the emulator onto the system clipboard.

The paste action types data from the system clipboard onto the emulator, starting at the current cursor position. The clipboard is processed one line at a time. Processing starts at the current cursor position, with each new line starting at the cursor column on successive rows. For each line, the characters are typed into the emulator at sequential positions. If the character cannot be typed successfully, the character and the emulator position are skipped. When the right edge of the emulator is reached, the rest of the clipboard line is ignored.

By default, Ctrl-C can be used for the copy command and Ctrl-V for the paste command. These keystrokes can be remapped in the usual manner.

Selecting an Area to Copy

To copy data to the clipboard, you must first make a selection on the emulator. A selection is a rectangular portion of the screen.

You can control the selection in several ways:

- Press mouse button 1 on the emulator and drag the mouse to create a selection.
- Press mouse button 1 on one of the selection boundary markers and drag the mouse to modify the selection.
- Use the Edit → Select All menu option to select the whole screen.
- Use the Edit → Select None menu option to deselect any existing selection.

- Use the Edit → Select Field menu option to select the field containing the cursor.
- There are accelerator keys that map to the menu operations, as well as for modifying the selection area:

Accelerator Key	Key Mapping	Action
Ctrl-G	<code>ctrl.pressed.G=selectAll</code>	Selects the entire screen.
Ctrl-N	<code>ctrl.pressed.N=selectNone</code>	Deselects any existing selection.
Ctrl-F	<code>ctrl.pressed.F=selectField</code>	Selects the field containing the cursor.
Shift-Right Arrow	<code>shift.pressed.RIGHT=selectionRight</code>	Expands or contracts the right side of the selection.
Shift-Left Arrow	<code>shift.pressed.LEFT=selectionLeft</code>	Expands or contracts the left side of the selection.
Shift-Up Arrow	<code>shift.pressed.UP=selectionUp</code>	Expands or contracts the top of the selection.
Shift-Down Arrow	<code>shift.pressed.DOWN=selectionDown</code>	Expands or contracts the bottom of the selection.

If you are a new user of Sun MTP J3270, these key mappings are automatically set. Otherwise, you might have to modify the `.j3270.keymap.properties` file to add them.

The selection on the emulator screen is automatically cleared when a 3270 AID key is pressed, or when the copy action is invoked.

Color Schemes

A color scheme is a definition of the colors used to display the 3270 terminal.

Three system-defined color schemes are always available.

Color Scheme	Description
<code>system:default</code>	The default 3270 colors.
<code>system:whiteonblack</code>	A monochrome color scheme with a black background.
<code>system:blackonwhite</code>	A monochrome color scheme with a white background.

▼ To Select a Color Scheme

- Use one of the following methods:
 - Start the emulator from the command line and use the `-C colorscheme-name` option.
 - Select an appropriate color scheme using the menu option Settings → Color Scheme.

User-Defined Color Schemes

A user-defined color scheme is a file with the name *colorscheme-name.colorscheme*.

You can use any of the color schemes in your `colorschemes` directory.

On Solaris or UNIX systems, the `colorschemes` directory is:

```
${HOME}/.j3270/colorschemes
```

On Windows systems, the `colorschemes` directory is:

```
C:\Documents And Settings\userid\.j3270\colorschemes
```

Note – You might have to manually create these directories if they do not already exist.

A sample user-defined color scheme is provided in the `samples/colorschemes` directory of the Sun MTP J3270 installation. To make the sample available, copy it to your `colorschemes` directory.

A color scheme file consists of a set of entries in the format *key=value*. In most cases, *value* is a hexadecimal number in the form `0xRRGGBB`, where *RR*, *GG*, and *BB* are the red, green, and blue components of the desired color. Examine the sample color scheme for details of the meanings of the various entries.

Color schemes can also have an optional display name. This is the name used in the Sun MTP J3270 GUI. If a display name is not specified in the color scheme, the actual color scheme name is displayed in the GUI. It is the color scheme name and not this display name that is used with the `-C` option of the `j3270` command.

Specifying Keyboard Mapping

A real 3270 emulator has a number of special keys, such as Clear and Reset, that are not provided on the standard PC keyboard. Sun MTP J3270 maps certain keys and key combinations to the actions of these special keys. You can also use key mapping to control cursor movement on the screen. For more information about cursor control, see [“Accessibility Features of Sun MTP J3270” on page 19](#).

▼ To View the Current Key Mapping

- On the emulator window, select **Help → Key Mapping**.

▼ To Change the Current Key Mapping

- **Edit the `.j3270.keymap.properties` file, which is located in your `$HOME` directory.**

The following example shows some lines from this file:

```
pressed.BACK_SPACE=backspace
shift.pressed.TAB=backtab
pressed.ESCAPE=pressClear
pressed.ENTER=pressEnter
ctrl.pressed.ENTER=newline
```

Each line in the `.j3270.keymap.properties` file maps one or more keystrokes to an action. Be careful when editing this file and be sure the keystrokes and action names are correct. If any actions are specified incorrectly, error messages are displayed when you start Sun MTP J3270.

It is permissible to map multiple keys to one action. For example, to map Ctrl-Z and Shift-Enter to the newline action, type the following lines in the properties file:

```
CTRL.pressed.Z=newline
SHIFT.pressed.ENTER=newline
```

Do not assign the same keystroke for two actions. For example the following lines, which attempt to assign Ctrl-Z to backspace and newline, will not work:

```
CTRL.pressed.Z=backspace  
CTRL.pressed.Z=newline
```

You cannot change the key map while Sun MTP J3270 is running. You must stop Sun MTP J3270, edit the file, and restart Sun MTP J3270.

▼ To Restore the Key Mapping to the Default Values

1. **Stop Sun MTP J3270.**
2. **Delete the `.j3270.keymap.properties` file.**
3. **Restart Sun MTP J3270.**

The `.j3270.keymap.properties` file is automatically recreated.

Resizing Sun MTP J3270

When you resize Sun MTP J3270, it attempts to change the font size of the emulator, so that the emulator fits the specified size. This provides a simple way to make the emulator display more readable. However, it might result in an area smaller than the one you specified. If you are having difficulty achieving the results you want using this method, use the Settings → Font option to specify a particular size.

Diagnostic Information

There is a dump function within Sun MTP J3270 to enable you to obtain diagnostic information about the current state of the terminal.

Note – This diagnostic information is primarily for the use of support personnel and is unlikely to be of direct interest to most users.

The diagnostic dump command saves Sun MTP J3270 diagnostic information to a file. The file is saved to the directory from which the Sun MTP J3270 was started. When you issue a dump, a message displays the file and directory name. The dump saves general information about the emulator, as well as the current screen. If tracing is turned on, the file will also contain the data flows from the emulator to the host and from the host to the emulator. The trace information is from the time tracing was started until the time the dump was taken.

Using Sun MTP J3270 in DBCS Mode

To use Sun MTP J3270 in double-byte character set (DBCS) mode, choose one of the available DBCS code pages on the Connect window, or specify a DBCS code page using the `-c` parameter of the `j3270` command.

Available 3270 Field Types

When running in DBCS mode, each 3270 field is one of the following types:

- A pure single-byte field
- A pure double-byte field
- A mixed single- and double-byte field known as a SOSI (shift-out, shift-in) field

Restrictions on a Pure Single-Byte Field

A pure single-byte field can only contain single-byte characters. Any attempt to type a character into a pure single-byte field that is not a single-byte character results in a terminal alarm.

Restrictions on a Pure Double-Byte Field

A pure double-byte field can only contain double-byte characters. A double-byte character occupies two display positions and is twice the physical width of a single-byte character. Any attempt to type a character that is not a double-byte character into a pure double-byte field results in a terminal alarm.

Note – A character is considered double-byte if its representation in the selected host code page is two bytes.

Restrictions on Mixed (SOSI) Fields

A SOSI field can contain both single- and double-byte characters. You must enclose all double-byte characters in a SOSI field within a pair of SOSI characters.

- SO and SI characters each occupy a display position.
- By default, an SO character appears as a “less than” symbol, <.
- By default, an SI character appears as a “greater than” symbol, >.
- SO and SI characters are inserted automatically as a terminal user types. The terminal user does not have to enter them.
- Any keyboard entry operation that would leave DBCS characters outside an enclosing SOSI pair is invalid and is rejected with a terminal alarm; for example, deleting an SI character that would leave a DBCS character immediately adjacent to a single-byte character set (SBCS) character.
- An attempt to enter DBCS characters that does not leave room for the required SO and SI characters to be automatically inserted in the field is rejected with a terminal alarm; for example, typing a DBCS character in the last two display positions of a SOSI field.

The appearance of SO and SI symbols can be changed from the default to display either as blank characters, or as right and left pointing arrows, respectively. Use the menu option Settings → SO and SI to make the change.

Making an Association With an Internet Browser

Note – This section applies to users on Windows systems.

You can configure some web browsers so that any links to TN3270 hosts are started with Sun MTP J3270. When you click on the link, the browser starts Sun MTP J3270 and attempts to make a connection to the TN3270 system.

On your Windows system, associate files of type URL:TN3270 Protocol with j3270 -u. You must have Sun MTP J3270 in your path or you must specify the complete path name where the j3270 executable is installed. Refer to Windows Help for instructions on associating files.

Accessibility Features of Sun MTP J3270

The Sun MTP J3270 software contains accessibility features, which make it usable by assistive technologies. Using the Sun MTP J3270 software with the Sun MTP software makes Sun MTP accessible by assistive technologies.

The accessibility features of Sun MTP J3270 are:

- Three color schemes:
 - Standard: The emulator displays colored text.
 - High contrast 1: The emulator text is white and the background is black.
 - High contrast 2: The emulator text is black and the background is white.

Controls to set the color scheme, are located on the Settings menu. See [FIGURE 2-2](#).

- Controls that move the cursor around the screen:
 - Move to first field: Moves the cursor to the first character position of the first field of the screen
 - Move to next field: Moves the cursor to the first character position of the next field relative to the field where the cursor is located
 - Move to previous field: Moves the cursor to the first character position of the previous field relative to the field where the cursor is located

These controls accommodate those assistive technologies that require the cursor to be in a field for that field to be accessed.

These movement controls differ from the Home, Tab, and Backtab controls, which only move the cursor to editable fields. These movement controls move the cursor to all fields.

To view the current key mappings for these controls, follow the procedure in [“To View the Current Key Mapping” on page 15](#). To define these movement controls, see [“To Change the Current Key Mapping” on page 15](#).

- Support for the Java Accessibility API, which ensures that Sun MTP J3270 is accessible by assistive technologies that conform to the API. For example, a screen reader technology that conforms to the Java Accessibility API can read the contents of the emulator screen.

The Java Access Bridge is required for an assistive technology to interact with a JVM. Before an assistive technology can be used with the Sun MTP J3270 emulator, the Java Access Bridge must be installed into the JVM that is to be used to run the emulator. Note that the Windows version of Sun MTP J3270 is distributed with its own JVM, which is used to run the emulator. You must ensure that this JVM has the Java Access Bridge applied to it to enable assistive technologies.

The Java Access Bridge can be obtained from:

<http://java.sun.com/products/accessbridge>

For instructions on how to install the Java Access Bridge, refer to its documentation.

Note – DBCS and SOSI fields might not report the correct information when an assistive technology inquires about the fields' contents.

Index

NUMERICS

3270 field types, 17
3270 terminal emulator, *See* Sun MTP J3270

A

accelerator keys for copy function, 13
accessibility features, 19
allow TN3270E protocol, 11
animation, remote, 6

C

code pages
 specifying, 11
 supported, 6
coerce EW to EWA, 11
color schemes
 accessibility, 19
 using, 13
connecting to a host
 using a URL, 4
 using command line parameters, 4
 using the emulator window, 7, 10
copying, 12
cursor controls, 19

D

diagnostic information, 16
double-byte character sets (DBCS), 17, 20
double-byte field, 17
dump function, 16

E

emulator
 accessibility features, 19
 color schemes
 accessibility, 19
 connect window, 11
 copy/paste functions, 12
 cursor controls, 19
 menu bar, 8
 status bar, 9
enabling DBCS, 17
exclude use of TN3270E protocol, 6

F

field types, 3270, 17
files
 color scheme, 14
 diagnostic dump, 17
 .j3270.keymap.properties, 15, 16

H

host inactivity timeout, 5
host name, specifying, 4, 11

I

installing Sun MTP J3270, 2
Internet browser, associating Sun MTP J3270, 18

J

j3270 command, 4
.j3270.keymap.properties file, 15, 16
Java Accessibility API, 19
Java runtime environment (JRE), 1

K

keyboard mapping, 15

M

mapping keys, 15
menu bar, emulator, 8

N

netname, specifying, 12

P

pasting, 12
port number, specifying, 4, 11
print style, specifying, 5

R

remote animation, 6
resizing Sun MTP J3270, 16

S

selecting a screen area to copy, 12
shift-out, shift-in (SOSI) field, 18, 20
single-byte field, 17
starting Sun MTP J3270, 4
status bar, emulator, 9
Sun MTP J3270
 accessibility features, 19
 associating with an Internet browser, 18
 emulator connect window, 11
 installing, 2
 resizing, 16
 starting, 4

T

terminal model, specifying, 11
timeout value, specifying, 5
TN3270 server, 4, 11

U

unikixrc.cfg file, 4, 11
unikixtnemux server, 1
URL file types, associating, 18
URL, specifying, 4
user-defined color schemes, 14